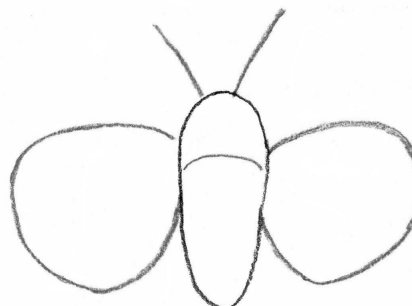


Silkworms feed on the leaves of mulberry trees. After they spin their cocoons, the threads are unwound and spun into silk. Did you know that it takes 30,000 silkworms to produce 12 pounds of raw silk?



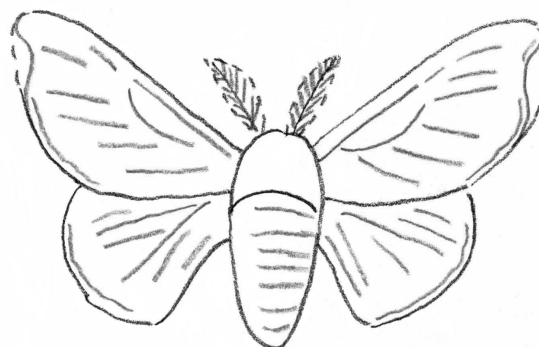
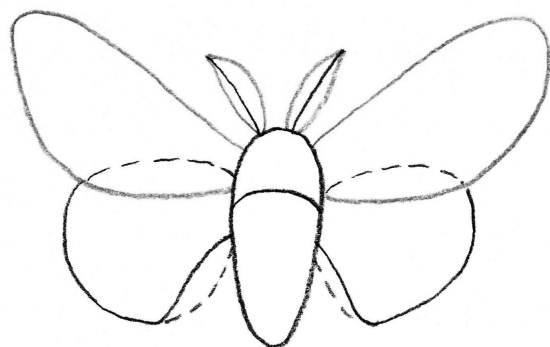
Silkworm Moth:

Step 1: Draw an oval that is slightly rounder on top.

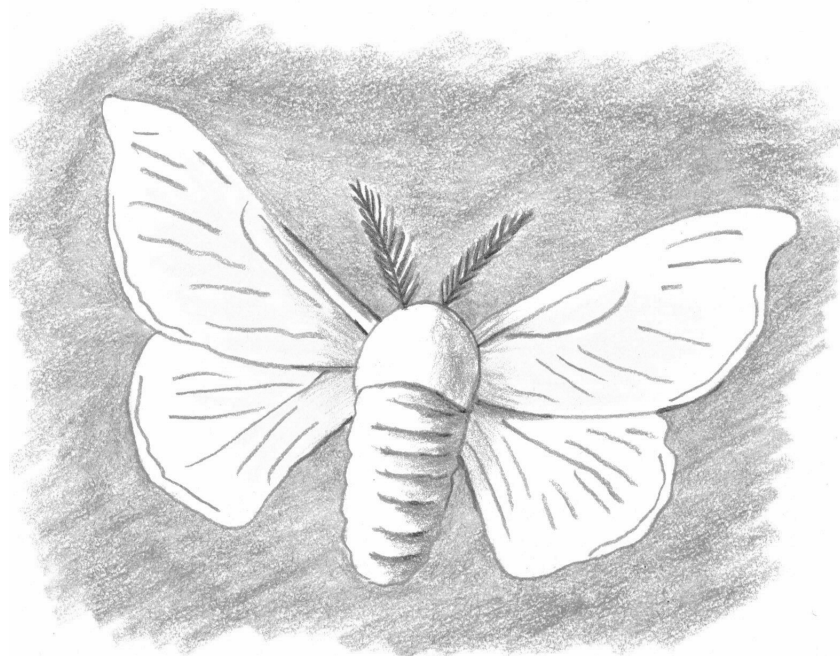


Step 2: Draw lines for the antennae and circles for lower wings. Also, add a curved line to the body.

Step 3: Draw upper wings. Add lines for the shape of antennae and erase unneeded lines.



Step 4: Fill in antennae. Add lines across the body and light lines for the veins in the wings.



Step 5: Draw moth in silver or gray. Shade lightly with cream and silver or gray. Add a colorful background.